

## Public Transport to/from Tongue YH

It is possible to get to Tongue by public transport but it requires some careful planning. We strongly advise to check for up-to-date timetables on the following websites:

[www.royalmail.com/postbus](http://www.royalmail.com/postbus), [www.stagecoachbus.com](http://www.stagecoachbus.com) & [www.northlinkferries.co.uk](http://www.northlinkferries.co.uk)

**Please note there is no public transport to or from Tongue on Sundays**

### Public transport to Tongue from other hostels in the North Updated: May 2009

#### Inverness YH or Carbisdale Castle YH to Tongue (Mon-Sat)

Dep	Inverness	07.06	Train (towards Thurso)
Dep	Culrain	08.37	Train (towards Thurso)
Arr	Lairg	08.51	

The Post Office is 2km from the train station. There is normally a local bus covering this distance otherwise the local taxi number is 01549 402399

Dep	Lairg PO	09.30	Postbus (route 134)
Arr	Tongue	10.30	

Lairg Delivery Office 01549 402025 (6-8am) for post bus enquiries

#### Alternative route (Mon-Fri)

Dep	Inverness	10.38	Train
Arr	Thurso	14.24	
Dep	Thurso (Olrig St)	15.25	Stagecoach route 73
Arr	Tongue	17.45	

#### Durness YH to Tongue (Mon-Fri)

Dep	Durness PO	08.10	Rapsons bus
Arr	Lairg PO	10.35	

A local bus usually operates between the PO and train station in Lairg (2km) Otherwise the local taxi number is 01549 402399

Dep	Lairg Station	12.19	Train
Arr	Thurso	14.24	

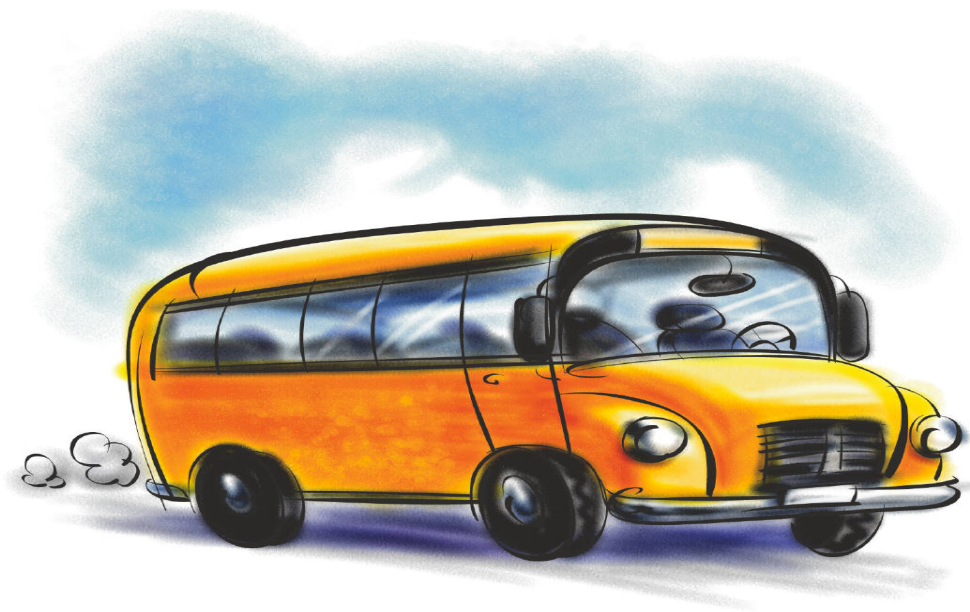
Dep	Thurso (Olrig St.)	15.25	Stagecoach route 73
Arr	Tongue	17.45	

### **John O'Groats YH to Tongue (Mon-Fri)**

Dep	John O'Groats YH, Canisbay	7.46	Bus (route 80)	14.11	Sat	13.16
Arr	Thurso	8.43		15.07		14.12
Dep	Thurso (Olrig St.)	9.40	Bus (route 73)	15.25		15.25
Arr	Tongue	11.10		17.45		17.45

### **Kirkwall YH (Orkney) to Tongue (Mon-Fri)**

Dep	Kirkwall	8.55	9.45	Rapsons (bus 91)		
Arr	Stromness	9.25	10.15			
Dep	Stromness	11.00		Northlink Ferries		
Arr	Scrabster	12.30				
Dep	Scrabster	12.45		Bus (route78x)		
Arr	Thurso (Rail station)	13.00				
Dep	Thurso(Olrig St)	15.25		Bus (route 73)		
Arr	Tongue PO	17.45				



**Public Transport from Tongue to other hostels in the north  
Updated: May 2009**

**Tongue to Carbisdale Castle YH or Inverness YH (Mon-Sat)**

Dep	Tongue PO	08.15	postbus (route 134)	07.45 (Sat)
Arr	Lairg PO	09.15		09.05

A local bus usually operates between Lairg PO and Lairg train station. (2km)  
Local taxi number 01549 402399

Dep	Lairg (Train station)	10.38	15.08	Train
Arr	Culrain for Carbisdale YH	---	15.20	
Arr	Inverness	12.13	16.47	

Lairg Delivery Office 01549 402025 (6-8am) for post bus enquiries

**Alternative route (Mon-Sat)**

Dep	Tongue PO	11.33	Stagecoach (route 73)
Arr	Thurso (Olig St)	13.03	

Dep	Thurso (Train station)	16.29	Train
Arr	Culrain for Carbisdale YH	18.41	
Arr	Inverness	20.10	

### **Tongue YH to Durness YH (Mon-Sat)**

Dep	Tongue PO	08.15 (Mon-Fri) postbus (route 134)	07.45 (Sat)
Arr	Lairg PO	09.15	09.05
Dep	Lairg PO	12.30 Rapsons/Stagecoach	12.30
Arr	Durness	14.55	14.55

### **Tongue to John O'Groats YH (Mon-Fri)**

Dep	Tongue PO	11.33	Stagecoach (route 73)	<b><u>Sat</u></b> 11.33
Arr	Thurso (Olig St)	13.03		13.03
Dep	Thurso (Olig St)	15.39	17.42 Bus (route 80)	17.00
Arr	Canisbay for JOG	16.38	18.37	17.51

Please note: no access to the Youth Hostel in John O'Groats before 5pm

### **Tongue to Kirkwall YH (Mon-Sat)**

Dep	Tongue PO	11.33	Stagecoach (route 73)
Arr	Thurso (St John's Sq)	13.03	
Dep	Thurso (Rail station)	17.55	Bus (route 78x)
Arr	Scrabster	18.10	
Dep	Scrabster	19.00	Northlink Ferries
Arr	Stromness	20.30	
Dep	Stromness	21.00	Bus (route 91)
Arr	Kirkwall	21.30	

**This information was updated 10/05/09**